

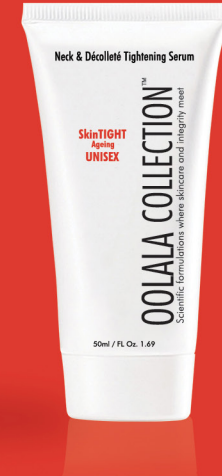
SkinESSENTIALS



SkinCLEAR



SkinTIGHT



SkinHYDRATE



SkinGLOW



# OOLALA COLLECTION™

Scientific formulations where skincare and integrity meet

## INGREDIENT GUIDE

SkinFIRM



OolalaSPORT



OolalaMAN



OolalaKITS  
OolalaTRAVEL



# WELCOME TO THE OOLALA COLLECTION CLUB

Imagine a high-quality skincare line for both men and women that delivers on all its promises. A local brand that's affordable, accessible, and most importantly — authentic. Meet South Africa's brand-new unisex luxury beauty and lifestyle brand, The Oolala Collection.

We believe that everyone is beautiful. Our products are created for our members, both men and women, who care as much about their wallet as they do their image. Yes. Our members are smart, they are not sheeple. Our members know what they want, and they get what they want! Why should it be any other way? You deserve only the BEST!

*WE STAND FOR: Affordable Luxury, Proudly South African Products, Clean Beauty, Beauty Without Cruelty and Respecting Our Planet.*

## NO B.S

Our skincare line has been developed with only the very best clean ingredients backed by years of scientific research. Our cutting-edge formulations are of the highest quality. We are proud to say that The Oolala Collection range stands in a class of its own and the results of our products speak for themselves. Our promise to you, our consumers is complete honesty, consistency and transparency. It's as simple as that. The market is saturated with false labels and empty promises, the beauty industry needs a makeover. We are here to deliver it to you straight!

## #WeGiveAnF

The Oolala Collection Club is all about beauty with brains and a heart. We are passionate about beauty without cruelty and set out to create an innovative range of skin and body care products that DO NOT test on animals. We at the Oolala Collection are on a mission. We are growing a community of like-minded individuals who are not afraid to be brave and to stop accepting the status quo. We believe in finding purpose, self-love, looking after our health, encouraging open conversations and creating positive change. Our ethics drive our recommendations, not our bottom line.

## BEAUTY ON DEMAND

Our aim is to create a personalized online shopping experience which is simple and affordable. Our eCommerce platform allows you to find your customized skincare solution in a matter of minutes! So, no need to wait or queue, just click and purchase online. Our OolalaBOT is here to answer all your questions and to guide you through the process, your own personal shopper.

## WE ♥ OUR PLANET

The world is our source of beauty and is facing devastation. As a brand we understand that there is an impact with everything we do. We want our environment to be clean and healthy not only for this generation, but for future generations. A clean planet means a healthier environment for us to live in... better for our health and our wellbeing. In order to show we care, we have created clean cutting edge products that focus on preserving and protecting the environment. We have done this by eliminating the use of boxes and making all our products recyclable. The high-quality formulations of our ingredients are our core focus. The Oolala Collection Club is Eco-friendly, and we strive to make small efforts that show our respect to the planet, the importance of sustainability and minimizing our carbon footprint.

**100% VEGAN. 100% CRUELTY FREE. 100% PARABEN FREE. 0% QUESTIONABLE.**

Now that you know our story, it's time to explore the story of your skin.

**We are The Oolala Collection Club! #AffordableLuxury**

Join us!

**NO ANIMAL PRODUCTS USED. NOT TESTED ON ANIMALS. CLEAN BEAUTY. PARABEN FREE.**

**Oolala for now! XOXO**

## SkinESSENTIALS Deep Facial Cleansing Gel

### DESCRIPTION

This Deep Facial Cleansing Gel penetrates deep into the skin. This maximum strength formulation helps to lift away daily debris, dead skin cells & impurities. This product has been developed to hydrate the skin cells, promote skin cell metabolism, facilitate repair of damaged skin cells and enhance peripheral circulation without the stripping of moisture. It leaves the skin clean, pure & fresh. Suitable for all skin types.

### INGREDIENTS

Aqua(Water), Sodium Lauryl Sulphate, Propylene Glycol, Lauryl Betaine, Disodium Lauryl Sulfosuccinate, Acrylates C10-C30 Alkyl Acrylate Cross Polymer, Triethanolamine, Disodium EDTA, Parfum.



### DIRECTIONS

Dual Usage: In the morning it works as a deep facial cleanser and at night it helps wash away pollution and pore-clogging impurities. Apply a small amount onto wet skin in the AM & PM. Massage gently and then rinse well with warm water. For best results follow with the SkinESSENTIALS Day Moisturiser with SPF15 (AM) or SkinESSENTIALS Active Night Moisturiser (PM).

## SkinESSENTIALS 2in1 Deep Facial Cleanser With Toner

### DESCRIPTION

This 2in1 Deep Facial Cleanser With Toner gently cleanses away excess oil, dirt and dead skin cells leaving skin feeling clean and refreshed. While protecting the skin's natural moisture barrier, this 2in1 solution gently exfoliates leaving the skin soft — never too dry or tight. Specially formulated to provide clean, refreshing toning without the harsh drying effects of alcohol. Balance is restored to the skin without residue.

### INGREDIENTS

Aqua(Water), Sodium Lauryl Sulphate, Propylene Glycol, Lauryl Betaine, Disodium Lauryl Sulfosuccinate, Carbomer, Triethanolamine, Disodium EDTA, Hamamelis Virginia (Witch Hazel) Distillate Oil, Parfum.



### DIRECTIONS

Dual Usage: In the morning this formulation works as a deep facial cleanser and at night it helps wash away pollution and pore-clogging impurities. Apply a small amount onto wet skin in the AM & PM. Massage gently and then rinse well with warm water. For best results follow with the SkinESSENTIALS Day Moisturiser with SPF15 (AM) or SkinESSENTIALS Active Night Moisturiser (PM).



## SkinESSENTIALS Rehydrate Cleansing Milk

### DESCRIPTION

This Rehydrate Cleansing Milk lifts away make-up and impurities with spa-like efficiency. This soap-free cleansing milk detoxifies, softens and smoothes skin while it cleanses. Suitable for all skin types.

### INGREDIENTS

Aqua(Water), Paraffinum Liquidum, Stearic Acid, Triethanolamine, Cetyl Alcohol, Emulsifying Wax, Phenoxyethanol, Ethylhexylglycerin.



### DIRECTIONS

Apply a small amount onto moist hands and gently massage over face and neck. Begin at the centre of your face, moving outward. Make sure you rub the Rehydrating Milk on areas that need it most, such as the nose, cheeks, forehead and chin, all or some of which may have the biggest pores that could benefit from deep cleansing. Rinse well. Perfect for removing makeup. Follow with the SkinESSENTIALS Purifying Facial Toner – Alcohol Free and the SkinESSENTIALS Day Moisturiser with SPF15 (AM) or SkinESSENTIALS Active Night Moisturiser (PM).

## SkinESSENTIALS Purifying Facial Toner - Alcohol Free

### DESCRIPTION

This Purifying Facial Toner - Alcohol Free assists with the elimination of oil and impurities from the skin and restores balance to the skin. This toner is specially formulated to provide clean refreshing toning without the harsh drying effects of alcohol. Skin will feel fresh and clean – without tightness, dryness or stinging. Suitable for all skin types including acne-prone skin problems.

### INGREDIENTS

Aqua(Water), Octyl Methoxycinnamate, Glycerin, Benzophenone-3, Isopropyl Myristate, Paraffinum Liquidum, Butyl Methoxydibenzoylmethane, Sorbitan Stearate, Polysorbate-60, Carbomer, Triethanolamine, Dimethicone, Disodium EDTA, Parfum.



### DIRECTIONS

After washing your skin with SkinESSENTIALS Deep Facial Cleansing Gel, pour a small amount onto cotton pad or gauze and gently wipe over face and neck. For optimal results, follow with the recommended SkinESSENTIALS Exfoliators and Moisturisers.

## SkinESSENTIALS Day Moisturiser With SPF15

### DESCRIPTION

SkinESSENTIALS Day Moisturiser With SPF15 for face and neck skincare, provides moisture and sun protection while helping to repair and restore the signs of ageing. This formulation minimizes the appearance of fine lines and wrinkles while restoring the skin's elasticity. A special blend of minerals leaves the complexion radiant even without makeup. Suitable for all skin types.

### INGREDIENTS

Aqua(Water), Octyl Methoxycinnamate, Glycerin, Benzophenone-3, Isopropyl Myristate, Paraffinum Liquidum, Butyl Methoxydibenzoylmethane, Sorbitan Stearate, Polysorbate-60, Carbomer, Triethanolamine, Dimethicone, Disodium EDTA, Parfum.



### DIRECTIONS

Use daily. Apply evenly onto face and neck area. For optimal results start by using the SkinESSENTIALS Deep Facial Cleansing Gel followed by the SkinESSENTIALS Purifying Facial Toner – Alcohol Free and the SkinESSENTIALS Exfoliator Advanced with Enzymes to get a gorgeous glow!

## SkinESSENTIALS Active Night Moisturiser

### DESCRIPTION

SkinESSENTIALS Active Night Moisturiser has been designed to nourish and repair the skin while you sleep. This formulation provides the skin with long-term moisturising benefits leaving it softer, fuller and more supple. To enhance the anti-ageing effect and help with repairing sun damage add SkinTIGHT Facial Tightening Intelligence Serum to your evening pampering. Suitable for all skin types.

### INGREDIENTS

Aqua(Water), Paraffinum Liquidum, Propylene Glycol, Emulsifying Wax, Glycerin, Cetearyl Octanoate, Petrolatum, Cetearyl Alcohol, Glyceryl Stearate, Octyl Dodecanol, Phenyl Trimethicone, Cyclomethicone, Carbomer, Disodium EDTA, Triethanolamine. Phenoxyethanol, Ethylhexylglycerin, Parfum. Ethylhexylglycerin, Parfum.



### DIRECTIONS

Apply a small amount to a cleansed face using light upward strokes. For optimal results apply the SkinESSENTIALS Active Night Moisturiser after using the SkinESSENTIALS Deep Facial Cleansing Gel or the SkinESSENTIALS Rehydrating Cleansing Milk and the SkinTIGHT Facial Tightening Intelligence Serum.

## SkinESSENTIALS Brightening Eye Serum

### DESCRIPTION

This Brightening Eye Serum is a unique peptide formulation which helps to reduce the appearance of dark rings and puffiness around the eyes. These imported peptides also help to reduce the appearance of crow's feet and fine lines around the eye. There is no bleaching action. Suitable for all skin types.

### INGREDIENTS

Aqua(Water), Acetyl Tetrapeptide-5, Glycerin, Butylene Glycol, Polysorbate-20, Palmitoyl Pentapeptide 3, Nylon-12 Fluorescent Brightener 230 Salt, Polyvinylalcohol Crosspolymer, Steareth-20, Hydroxysuccinimide, Chrysin, Palmitoyl Oligopeptide, Palmitoyl Tetrapeptide-7, Carbomer, Triethanolamine, Isopropyl Palmitate, Phenoxyethanol (and) Ethylhexylglycerin.

**Actives**  
Acetyl Tetrapeptide-5 (Eyeseryl), Palmitoyl Pentapeptide 3 - (Matrixyl), Nylon-12 Fluorescent Brightener 230 Salt, Polyvinylalcohol Crosspolymer, Hydroxysuccinimide, Chrysin - (Lipolight OAP/PVA), Glycerin, Steareth-20, Chrysin, N-Hydroxysuccinimide, Palmitoyl Oligopeptide, Palmitoyl Tetrapeptide-7 (Haloxyl).



**Benefits Of Lipolight**  
This is a reflective agent that absorbs UV light and provides an instant (within 15 Minutes) appearance of reduction of fine wrinkles. Palmitoyl Oligopeptide, Palmitoyl Tetrapeptide-7 (Haloxyl).

**Benefits Of Haloxyl**  
Fights against the accumulation of blood degradation products around the eyes and reduces dark circles under the eyes.

**Benefits Of EYESERYL®**  
A tetrapeptide with anti-oedema properties with a proven efficacy in reducing puffy eyebags. Achieves a reduction of puffy eyebags in only 15 days — fast anti-eye-bag action.

**Benefits Of Matrixyl**  
Works to mimic the appearance of this broken-down collagen, causing your skin to react by producing more collagen, as well as elastin (responsible for the skin's elasticity) & hyaluronic acid (which plumps up the skin and gives it that healthy, full look.)

### DIRECTIONS

Apply a small amount SkinESSENTIALS Brightening Eye Serum to delicate eye area twice daily and gently massage until fully absorbed. This serum is a treatment, therefore for best results use in conjunction with SkinESSENTIALS Moisturising Eye Treatment.

## SkinESSENTIALS Moisturising Eye Treatment

### DESCRIPTION

SkinESSENTIALS Moisturising Eye Treatment is enriched with vitamins and moisturisers to help the skin repair itself and keep the delicate area around the eye smooth and hydrated. Matrixyl® stimulates collagen production and helps heal the lower layers of the skin. Suitable for all skin types.

### INGREDIENTS

Aqua(Water), Cetearyl Alcohol, PEG-20 Stearate, Butylene Glycol, Caprylic/Capric Triglyceride, Decyl Oleate, Glycerin, Carbomer, Polysorbate-20, Palmitoyl Pentapeptide-3, Panthenol, Dimethicone, Tocopherol, Cetyl Alcohol, Ascorbyl Palmitate, Glyceryl Stearate, Dimethylaminoethanol, Disodium EDTA, Retinyl Palmitate, Phenoxyethanol, Ethylhexylglycerin.



**Actives**  
Ascorbyl Palmitate, Tocopherol, Retinyl Palmitate, Palmitoyl Pentapeptide-3.

**Benefits of Matrixyl**  
Stimulates collagen production resulting in a BOTOX effect.  
Increase overall collagen synthesis by up to 117%.  
Increase collagen IV synthesis by up to 327%.  
Increase hyaluronic acid synthesis by up to 267%.

### DIRECTIONS

For maximum benefit use morning and evening. Apply gently onto the skin area surrounding the eyes. Use alone or under makeup. For best results use in conjunction with SkinESSENTIALS Brightening Eye Serum and SkinTIGHT Facial Tightening Intelligence Serum.

## SkinESSENTIALS Gentle Apricot Kernel Scrub

### DESCRIPTION

SkinESSENTIALS Gentle Apricot Kernel Scrub is an ideal exfoliator for face and body. It is made of finely ground apricot kernels, the exfoliating action is gentle, yet effective. The natural exfoliating action cleanses the skin and removes dirt and impurities while getting rid of dead skin cells. The result is a glowing, fresh, soft and smooth skin. Crushed Apricot Kernels remove dead skin cells leaving skin super- soft.

### INGREDIENTS

Aqua(Water), Cetearyl Alcohol, Octyl Dodecanol, Paraffinum Liquidum, Cocamidopropyl Betaine, Sodium Lauryl Sulphate, Prunus Armeniaca (Apricot) Kernels, Sodium Hydroxide, Phenoxyethanol, Ethylhexylglycerin, Parfum.



### DIRECTIONS

Wash your face with SkinESSENTIALS Deep Facial Cleansing Gel then apply to damp face. Gently exfoliate with a circular motion. Rinse well with warm water and pat dry. Finish off by applying the SkinESSENTIALS Day Moisturiser with SPF15 in the AM or the SkinESSENTIALS Active Night Moisturiser if used in the PM. Use once or twice per week for a wonderfully clean, soft and refreshed complexion.

## SkinESSENTIALS Brightening Exfoliator Scrub

### DESCRIPTION

As our skin grows, it casts off dead skin. These dead cells block the pores causing blackheads and make the skin surface look dull. Exfoliation gently removes these dead cells and reveals new softer, clearer and glowing skin. It also helps in stimulating blood circulation. Exfoliation is essential for cell rejuvenation. This scrub is a pumice exfoliator that gives the skin a polished and renewed look. It helps to remove the dullness of congestion and refine the skin texture. This stimulates circulation and cell regrowth thereby allowing the skin to repair itself.

### INGREDIENTS

Aqua(Water), Cetearyl Alcohol, Octyl Dodecanol, Paraffinum Liquidum, Cocamidopropyl Betaine, Sodium Lauryl Sulphate, Pumice, Prunus Armeniaca (Apricot) Kernels, Sodium Hydroxide, Phenoxyethanol, Ethylhexylglycerin, Flavour.



### DIRECTIONS

Apply a generous amount over dampened skin and massage into face and neck with circular motions, concentrating on rough areas. Rinse well. Finish off by applying the SkinESSENTIALS Day Moisturiser with SPF15 in the AM or the SkinESSENTIALS Active Night Moisturiser if used in the PM. If you have dry skin, one should not exfoliate more than 2x per week.

#### Benefits Of Papaya Extract

Gently removes dead cells and reveals new softer, clearer and glowing skin.  
Helps in stimulating blood circulation.  
Essential for cell rejuvenation.  
Gives the skin a polished and renewed look.  
Helps to remove the dullness of congestion and refine the skin texture.  
This stimulates circulation and cell regrowth thereby allowing the skin to repair itself.



## SkinESSENTIALS Exfoliator Advanced With Enzymes

### DESCRIPTION

The Exfoliator Advanced With Enzymes helps to unclog pores thus reducing and preventing breakouts. The special blend of papaya, pineapple and fruit extracts combined with orange oil have antiseptic, anti-inflammatory and exfoliating properties.

### INGREDIENTS

Aqua(Water), Glycerin, Carica Papaya Extract, Ananas Sativus(Pineapple) Fruit Extract, Glycerin, Carbomer, Triethanolamine, Citrus Sinensis(Orange) Oil, Disodium EDTA, Phenoxyethanol, Ethylhexylglycerin, Parfum.



### DIRECTIONS

Wash face with SkinESSENTIALS Deep Facial Cleansing Gel. Apply a small amount of SkinESSENTIALS Exfoliator Advanced with Enzymes to face. Using your fingers gently rub in small circular motions over entire face and neck for a few minutes. Rinse with warm water and pat dry. Repeat twice per week. Finish off by applying the SkinESSENTIALS Day Moisturiser with SPF15 in the AM or the SkinESSENTIALS Active Night Moisturiser if used in the PM.

## SkinESSENTIALS Firming & Tightening Cleansing Mask

### DESCRIPTION

SkinESSENTIALS Firming & Tightening Cleansing Mask is rich in Honeybush Extract, antioxidants and nutrients. This powerful formulation helps to combat the free radical activity that causes skin tone and texture to be compromised over time. The cleanser helps to draw out dirt and toxins. This tightening and lifting mask will help enhance and revitalise your skin giving you a more radiant and youthful appearance. Suitable for all skin types.

### INGREDIENTS

Aqua(Water), Kaolin, Zinc Oxide, Paraffinum Liquidum, Cetearyl Alcohol, PEG-40 Castor Oil, Sodium Cetearyl Sulfate, Bentonite, Alcohol Denat, Camphor, Carbomer, Triethanolamine, Cyclopia Genistoides(Honeybush) Leaf Extract, Phenoxyethanol, Ethylhexylglycerin.



### DIRECTIONS

Start by washing the face thoroughly with the SkinESSENTIALS Deep Facial Cleansing Gel followed by the SkinESSENTIALS Purifying Facial Toner then apply the SkinESSENTIALS Firming & Tightening Cleansing Mask to entire face and neck. Leave on till dry (10 - 15 minutes.) Remove gently with warm water and a damp cloth. Use weekly to firm and smooth the skins complexion.



## SkinESSENTIALS Clarify & Clear Detox Mask

### DESCRIPTION

SkinESSENTIALS Clarify & Clear Detox Mask contains a large number of specially selected waxes and moisturisers to give protection and moisture to the skin. The mask promotes restoration and regeneration of the skin while stimulating the processes of renewal. Suitable for all skin types.

### INGREDIENTS

Aqua(Water), Paraffinum Liquidum, Glycerin, Petrolatum, Isopropyl Myristate, Sorbitan Stearate, Polysorbate-60, Acrylates C10-C30 Alkyl Acrylate Cross Polymer, Triethanolamine, Propylene Glycol, Cetyl Alcohol, Potassium Cetyl Phosphate, Titanium Dioxide, Phenoxyethanol, Ethylhexylglycerin, Parfum.



### DIRECTIONS

Start by cleansing the face thoroughly with the SkinESSENTIALS Deep Facial Cleansing Gel followed by the SkinESSENTIALS Purifying Facial Toner – Alcohol Free. Next, apply the SkinESSENTIALS Detox, Clarify & Clear Mask. Leave on to take effect for 10 to 15 minutes. Once dry remove gently with warm water and a cloth. Use as needed.

## SkinESSENTIALS Colloidal Silt Ultra Mud Mask

### DESCRIPTION

A bioactive mineral and phospholipid-rich silt mud mask — with the active ingredient (SILT) sourced from fresh water lakes in Eastern Europe. Rich essential water-soluble vitamins and amino-acids. Phospholipids: A wonder of nature with scientifically proven skin hydrating qualities. Long-lasting moisturising & firming effects; suitable for all skin-types but especially dry & problem skin; evens out skin-tone with regular use; ideal for face masks, body wraps and bath treatments & even hair treatments.

### INGREDIENTS

Aqua(Water), Silt



### DIRECTIONS

Apply to cleansed face, leave on for 10 to 15 minutes until dry. Wash off gently with warm water and a damp cloth. For added results use the SkinESSENTIALS Exfoliator Advanced with Enzymes before applying the mask. This will help scuff off old and dead cells, leaving the skin feeling smooth and revitalised.

## SkinESSENTIALS Deep Active Purifying Mask

### DESCRIPTION

The word "kaolin" is derived from the name of the place where it originated - the Kaoling Hill in the Kiangsi province in China. It is also known as "China Clay"; is a natural claylike mineral (silicate of aluminium (which is derived from aluminium oxide) and is composed of silica, iron, magnesium, calcium, sodium, zinc and other minerals.

The benefits of this white powder are its insoluble nature and excellent absorbent qualities which are used to draw out impurities and toxins thereby clearing the skin of excess oil, dirt, pollutants and other waste materials. It also stimulates the organic processes in the skin, and acts to remineralise the skin, much like thermal mud.

### INGREDIENTS

Aqua (Water), Kaolin, Bentonite, Magnesium Carbonate, Alcohol Denat, Sorbitol, Glycerin, Zinc Oxide, Menthol, Propylene Glycol, Xanthan Gum, Phenoxyethanol, Ethylhexylglycerin, Parfum.

### Actives

Combination of kaolin, water, moisturisers and menthol to cleanse and soothe skin.



#### Benefits Of Kaolin

Draws out impurities and toxins.  
Clears the skin of excess oil, dirt, pollutants and other waste materials.  
Stimulates the organic processes in the skin.  
Acts to remineralise the skin, much like thermal mud.  
Improves firmness and relieves congestion.

#### Benefits Of Menthol Oil

Soothes skin irritations like sunburn, insect bites and allergic rashes

### DIRECTIONS

Apply a generous layer to the face and décolleté. Allow to set for 10-15 minutes. Rinse using a sponge or cotton cloth and warm water. Use every other week. Alternate with the SkinHYDRATE Intense Hydrating Mask.  
Your skin will feel fresh and glowing with health.

# Oolala Says

In order to show we care, we have created clean cutting edge products that focus on preserving and protecting the environment.

— OOLALA COLLECTION —

## SkinCLEAR Breakout Clearing Cleansing Gel

### DESCRIPTION

SkinCLEAR Breakout Clearing Cleansing Gel penetrates deep into the skin to help fight blemishes where they begin. This formulation helps prepare acne-prone skin for treatment and in the reduction of bacteria by maximizing penetration of active ingredients. This maximum strength cleanser helps combat acne and skin breakouts.

### INGREDIENTS

Aqua(Water), Sodium Lauryl Sulphate, Propylene Glycol, Lauryl Betaine, Disodium Lauryl Sulfosuccinate, Acrylates C10-C30 Alkyl Acrylate Cross Polymer, Triethanolamine, Disodium EDTA, Parfum.



### DIRECTIONS

Apply a small amount to damp skin in the AM and PM. Cleanse using gentle circular motion. Rinse and dry.

For best results use with SkinCLEAR Breakout Clearing Exfoliator with Enzymes, SkinCLEAR Breakout Clearing Anti-Bacterial Toner, SkinCLEAR Overnight Pimple Solution and SkinCLEAR Breakout Clearing Moisturiser with SPF15.

## SkinCLEAR Breakout Clearing Anti – Bacterial Toner

### DESCRIPTION

SkinCLEAR Breakout Clearing Anti – Bacterial Toner helps eliminate excess oil and restores balance to acne-prone skin. Tea Tree Oil assists with antibacterial and antifungal properties, while Witch Hazel helps to regulate oil production while tightening pores. Skin is left clean, refreshed and balanced.

### INGREDIENTS

Aqua(Water), Hamamelis Virginia (Witch Hazel) Distillate, Alcohol Denat, Propylene Glycol, Glycerin, Hydrolyzed Caesalpinia Spinosa Gum, Caesalpinia Spinosa Gum, Allantoin, Disodium EDTA, Polysorbate-20, Parfum, Melaleuca Alternifolia (Tea Tree) Leaf Oil, Phenoxyethanol (and) Ethylhexylglycerin.



### DIRECTIONS

Apply onto a cotton ball/gauze and gently wipe the product over the skin, focusing on oily areas such as the chin and forehead. Apply in the AM after cleansing, before applying face lotion and makeup. Use in the PM to get rid of dirt, bacteria, and oil that your face has had to deal with during the day.

For best results use with SkinCLEAR Breakout Clearing Cleansing Gel, SkinCLEAR Breakout Clearing Exfoliator with Enzymes, SkinCLEAR Overnight Pimple Solution and SkinCLEAR Breakout Clearing Moisturiser with SPF15.

## SkinCLEAR Breakout Clearing Moisturiser With SPF15

### DESCRIPTION

SkinCLEAR Breakout Clearing Moisturiser With SPF15 for face and neck skin-care provides moisture and sun protection while helping to repair and restore the signs of hormonal aging. This facial cream minimizes the appearance of fine lines and wrinkles while restoring the skin's elasticity. A special blend of minerals leave complexion radiant even without makeup. Suitable for all skin types.

### INGREDIENTS

Aqua(Water), Octyl Methoxycinnamate, Glycerin, Benzophenone-3, Glyceryl Stearate (and) Ceteareth-20 (and) Ceteareth-12 (and) Cetearyl Alcohol (and) Cetyl Palmitate, Butyl Methoxydibenzoylmethane, Paraffinum Liquidum, Butyrospermum Parkii (Shea Butter), Coco-Caprylate, Vitis Vinifera (Grape) Seed Oil, Carbomer, Phenoxyethanol (and) Ethylhexylglycerin, Disodium EDTA, Sodium Hydroxide, Parfum.



### DIRECTIONS

Use twice daily after cleansing and toning. Apply evenly over face and neck.

For best results use with SkinCLEAR Breakout Clearing Cleansing Gel, SkinCLEAR Breakout Clearing Anti-Bacterial Toner, SkinCLEAR Breakout Clearing Exfoliator with Enzymes and SkinCLEAR Overnight Pimple Solution.

## SkinCLEAR Breakout Clearing Exfoliator With Enzymes

### DESCRIPTION

SkinCLEAR Breakout Clearing Exfoliator With Enzymes for Problem Skin helps to unclog pores thus reducing and preventing breakouts. This formulation for Problem Skin contains Papaya Extract, Pineapple, Fruit extract and Orange Oil. Collectively they have antiseptic, anti-inflammatory and exfoliating properties.

### INGREDIENTS

Aqua(Water), Glycerin, Carica Papaya Extract, Ananas Sativus(Pineapple) Fruit Extract, Glycerin, Carbomer, Triethanolamine, Citris Sinensis(Orange) Oil, Disodium EDTA, Phenoxyethanol, Ethylhexylglycerin.



### DIRECTIONS

Wash your face with SkinCLEAR Breakout Clearing Cleansing Gel then apply a small amount of SkinCLEAR Breakout Clearing Exfoliator with Enzymes into the palm of your hand and gently rub over entire face and neck for a few minutes. Rinse with warm water and pat dry. Repeat 2 times per week.

For best results use together with SkinCLEAR Breakout Clearing Cleansing Gel, SkinCLEAR Breakout Clearing Anti-Bacterial Toner, SkinCLEAR Breakout Clearing Moisturiser with SPF15 and SkinCLEAR Overnight Pimple Solution.  
A sun block must be used when this product has been applied.

### Benefits Of Pineapple

Removes dead skin cells, surface dirt and oil. Promotes skin elasticity while removing dead damaged skin. Improves hydration and moisture.  
Promotes a more elastic and clear looking skin. Clear up break outs as it soothes inflamed skin. Firms skin (by boosting the production of collagen), sloughing off dead skin cells and evening out skin tone. Makes wrinkles less noticeable.



## SkinCLEAR Colloidal Silt Ultra Mud Mask

### DESCRIPTION

A bioactive mineral and phospholipid-rich strengthened silt mud mask — with the active ingredient (SILT) sourced from fresh water lakes in Eastern Europe. Rich essential water-soluble vitamins and amino-acids. Phospholipids: A wonder of nature with scientifically proven skin hydrating qualities. Long-lasting moisturising & firming effects; suitable for all skin-types but especially dry & problem skin; evens out skin-tone with regular use; ideal for face masks, body wraps and bath treatments & even hair treatments.

### INGREDIENTS

Aqua(Water), Silt



### DIRECTIONS

Apply to cleansed face, leave on for 10 to 15 minutes until dry. Wash off gently with warm water and a damp cloth.

For added results use the SkinESSENTIALS Exfoliator Advanced with Enzymes before applying the mask. This will help scuff off old and dead cells, leaving the skin feeling smooth and revitalised.

## SkinCLEAR Overnight Pimple Solution

### DESCRIPTION

SkinCLEAR Overnight Pimple Solution is a powerful formulation that helps to dry out pimples, reduce acne blemishes, blackheads and whiteheads. This treatment blends maximum-strength Salicylic Acid, Sulfur and Zinc Oxide to effectively kill bacteria & prevent the growth of micro-organisms.

### INGREDIENTS

Aqua(Water), Isopropyl Alcohol, Zinc Oxide, Magnesium Aluminum Silicate, Sulphur Precipitate, Salicylic Acid, Camphor, CI 17200, CI 77492.



### DIRECTIONS

Dip a cotton bud into the clear and pink solution. Apply onto pimple until completely covered. If large area needs to be covered then shake solution till well-mixed, apply on cotton wool and dab onto area. Make-up can be applied on top of dried solution. Can be applied twice daily to problem areas.

For best results use together with SkinCLEAR Breakout Clearing Cleansing Gel, SkinCLEAR Breakout Clearing Anti-Bacterial Toner and SkinCLEAR Breakout Clearing Moisturiser with SPF15.

# Oolala Says

Our skincare line has been developed with only the very best clean ingredients backed by years of scientific research. Our cutting-edge formulations are of the highest quality.

— OOLALA COLLECTION —



## SkinTIGHT Advanced Anti-Ageing Moisturiser Serum – Oil Free

### DESCRIPTION

This advanced Anti-Ageing Moisturiser Serum— Oil Free formulation hydrates the skin resulting in the softening of lines and wrinkles. This formulation reduces flaking and restores suppleness. The firming and lifting effects of this age-defying serum are enhanced with long-term use. Suitable for all skin types.

### INGREDIENTS

Aqua (Water), Glycerin, Dipeptide Diaminobutyryl Benzylamide Diacetate, Palmitoyl Tripeptide-5, Palmitoyl Dipetptide-5 Diaminobutyryl Hydroxythreonine, Palmitoyl Dipeptide-6 Diaminohydroxybutyrate, Hyaluronic Acid, PVM/MA Decadiene Crosspolymer, Sodium Hydroxide, Phenoxyethanol, Ethylhexylglycerin, Parfum.



**Actives**  
Dipeptide Diaminobutyryl Benzylamide Diacetate, Palmitoyl Tripeptide-5, Palmitoyl Dipetptide-5 Diaminobutyryl Hydroxythreonine, Palmitoyl Dipeptide-6 Diaminohydroxybutyrate, Hyaluronic Acid.

**Benefits Of Hyaluronic Acid**  
Key role in tissue hydration, lubrication and cellular function.

**Benefits Of Palmitoyl Tripeptide-5**  
Deeply skin penetrating peptide that can activate the tissue growth factor that stimulates collagen synthesis in the skin — helps to strengthen skin and reduce the appearance of fine lines and wrinkles. This peptide complex minimizes eye puffiness and fluid retention under the eye. It also controls inflammation and improves firming and elasticity of the skin.

**Benefits Of Dipeptide Diaminobutyryl Benzylamide Diacetate — (FP1104)**  
Synthetic tripeptide which mimics the action of a "neuromuscular blocking compound of the venom of the Temple Viper - significantly more powerful than Arginine - achieving a Botox-like muscle relaxing effect.

**Benefits Of Palmitoyl Dipeptide-5 Diaminobutyryl Hydroxythreonine**  
Enhances the appearance of dry or damaged skin

**Benefits Of Palmitoyl Dipeptide-6 Diaminohydroxybutyrate**  
Helps to smooth out the appearance of lines & wrinkles by decreasing their depth.

### DIRECTIONS

Apply over the entire face after cleansing and toning with SkinESSENTIALS Deep Facial Cleansing Gel and SkinESSENTIALS Purifying Facial Toner - Alcohol Free.

For best results apply twice daily.

## SkinTIGHT Facial Tightening Intelligence Serum

### DESCRIPTION

SkinTIGHT Facial Tightening Intelligence Serum not only repairs the skin Barrier layer, but also moisturises and is a unisex anti-ageing facial serum.

### INGREDIENTS

Aqua (Water), Isostearyl Alcohol, Butylene Glycol Cocoate, Ethylcellulose, Helianthus Annuus (Sunflower) Seed Oil, Ethyl Ferulate, Poly-40 Glyceryl-5 Trioleate, Rosmarinus Officinalis (Rosemary) Leaf Extract, Disodium Uridine Phosphate, Sesamum Indicum Seed Oil, Glycerin, Sucrose Stearate, Nigella Sativa Seed Oil, Glyceryl Caprylate, Aloe Barbadensis Leaf Juice Powder, Xanthan Gum, Isopropyl Palmitate, Onopordum Acanthium Flower/Leaf/Stem Extract, Acrylates C10-C30 Alkyl Acrylate Cross Polymer, Triethanolamine, Phenoxyethanol (and) Ethylhexylglycerin, Parfum.



**Actives**  
Celligent®, Cleomilk®, Gatuline® Skin-Repair Bio Celligent®. Protects the DNA and supports the repair of UV-induced cell damage.

**Benefits Of Cleomilk**  
Includes organic Black Caraway Oil, organic Sesame Oil and organic Aloe Vera. Prevents dehydration, counteracts skin de-lipidation when washing, accelerates the regeneration of the skin barrier.

**Benefits Of Gatuline® Skin-Repair Bio**  
Directly stimulates epidermal regeneration and promotes cutaneous repair.

### DIRECTIONS

After cleansing the face with SkinESSENTIALS Rehydrate Cleansing Milk or SkinESSENTIALS Deep Facial Cleansing Gel, apply a small amount of SkinTIGHT Facial Tightening Intelligence Serum with light upward strokes. After a few minutes other products can be applied. Use in the AM and PM.

For added results follow up with the SkinESSENTIALS Moisturising Eye Treatment and SkinESSENTIALS Brightening Eye Serum.



[www.oolalacollection.com](http://www.oolalacollection.com)



[@TheOolalaCollectionClub](https://www.facebook.com/TheOolalaCollectionClub)



[@theoolalacollection](https://www.instagram.com/theoolalacollection)



[info@oolalacollection.com](mailto:info@oolalacollection.com)

Customer care: 0795452926

vegan SA



## SkinTIGHT Restorative Anti-Ageing Mask

### DESCRIPTION

SkinTIGHT Restorative Anti-Ageing Mask is a luxuriously rich cream mask which helps restore a firm, resilient tone and relieves dehydrated skin. This formulation nourishes and tones and will leave your skin feeling revitalized and with renewed resilience. Contains the added benefits of Soy and Rice Bran extracts that help improve microcirculation and helps to protect the skins Collagen Matrix. Suitable for all skin types.

### INGREDIENTS

Hydrolyzed Rice Bran Protein, Glycine Soja (Soybean) Protein, Oxido Reductases.

**Benefits Of Hydrolyzed Rice Bran Protein**  
Rice bran has been highly valued in the Far East for many years. Japanese women who rubbed rice bran onto their faces to keep their skin smooth were referred to as "nuka bini" or "rice bran beauty." Rice Bran also has squalene derived from plant extract which reduces free radical-induced oxidative damage to the skin. What makes it so special is that it contains high levels of two remarkable antioxidants:

**Actives**  
Hydrolyzed Rice Bran Protein, Glycine Soja (Soybean) Protein, Oxido Reductases.

**Benefits Of Soybean**  
Improves hyperpigmentation, elasticity and moisture.

**Benefits Of Phytic Acid**  
An antioxidant that may help improve skin colour by inhibiting tyrosinase, a key enzyme involved in skin pigmentation.

**Benefits Of Oxido Reductases**  
An enzyme that catalyses the transfer of electrons from one molecule, the reductant, also called the electron donor, to another the oxidant, also called the electron acceptor.

**Benefits Of Gamma-Oryzanol**  
Called sterols and folic acid, and vitamin E, which together help slow the formation of facial wrinkles and reduce inflammation. Rice extracts also have moisturising and UV-absorbing properties, which helps prevent melanin formation and age spots, making these ingredients effective against dark circles and sunburn.



### DIRECTIONS

Apply evenly onto clean face and neck. Leave on for 10 to 15 minutes. Rinse with warm water and pat dry. Apply up to twice per week. Follow-up with your preferred SkinGLOW Radiance Repair Serum, SkinTIGHT Facial Tightening Intelligence Serum or the SkinTIGHT Advanced Anti-Ageing Moisturiser Serum — Oil Free.

## SkinTIGHT Neck & Décolleté Tightening Serum

### DESCRIPTION

SkinTIGHT Neck & Décolleté Tightening Serum uses the latest in peptide technology to: Help firm, lift & tighten neck & décolleté. Specially designed to re-contour chin & neck area by helping to minimise the appearance of thickness and volume of double chin fat. Helps to increase skin elasticity to prevent sagging. Improves & maintains optimum moisture thereby delaying the effects of premature ageing. Leaves skin smoother, softer & more radiant. Increases the tone and elasticity of the neck by up to 10% - which is significant in this thinly covered area.

### INGREDIENTS

Hydrogenated Polyisobutene and Ammarrhenae Asphodeloides, Aqua Water, Glycerine & Stearyl 20 & Palmitoyl Pentapeptide, Ovaliss.

**Actives**  
Hydrogenated Polyisobutene and Ammarrhenae Asphodeloides, Aqua Water, Glycerine & Stearyl 20 & Palmitoyl Pentapeptide, Ovaliss.

**Use the latest in peptide technology to:**  
Help firm, lift & tighten neck & décolleté.

Specially designed to re-contour chin & neck area by helping to minimise the appearance of thickness and volume of double chin fat.

Helps Increase skin elasticity to prevent sagging.

Improves & maintains optimum moisture thereby delaying the effects of premature ageing.

Leaves skin smoother, softer & more radiant.

Increase the tone and elasticity of the neck by up to 10% which is significant in this thinly covered area.

**Benefits Of Volufine**  
Promotes body volume by a cosmetic lipofilling-like effect. Stimulates adipocyte differentiation and proliferation and promotes lipid storage to bring volume where it is needed. Based on Sarsapogenin, a phytosterol with no hormonal activity.

**Benefits Of Rigin™**  
Has been shown in clinical studies to control the ecretion of cytokines in the skin. This is very important because cytokines are responsible for many of the signs of aging.

**Benefits Of OVALISS™**  
A natural substance, reduces thickness of fatty tissue. It erases the double chin and visibly reshapes the facial contours.



### DIRECTIONS

Apply twice daily, preferably after bathing while skin is supple & warm. Massage in and around the neck + décolleté.

For maximum results exfoliate once or twice per month with SkinESSENTIALS Gentle Apricot Kernel Scrub or SkinESSENTIALS Brightening Exfoliator Scrub.



[www.oolalacollection.com](http://www.oolalacollection.com)



[@TheOolalaCollectionClub](https://www.facebook.com/TheOolalaCollectionClub)



[@theoolalacollection](https://www.instagram.com/theoolalacollection)



[info@oolalacollection.com](mailto:info@oolalacollection.com)

Customer care: 0795452926

vegan SA





# Oolala Says

Our promise to you, our consumers is complete honesty, consistency and transparency. It's as simple as that.

— OOLALA COLLECTION —



## SkinHYDRATE Intense Hydrating Mask

### DESCRIPTION

The SkinHYDRATE Intense Hydrating Mask deeply nourishes the skin, instantly infusing it with moisture to give a plump and glowing complexion. This mask is loaded with the benefits needed to make your skin look and feel dewy and healthy. It has been designed to complement the rest of the Oolala Collection product range and has all the effective ingredients that your face will need for an intense boost of moisture. Suitable for all skin types.

### INGREDIENTS

Aqua (Water), Paraffinum Liquidum, Glycerin, Petrolatum, Isopropyl Myristate, Sorbitan Stearate, Polysorbate-60, Acrylates C10-C30 Alkyl Acrylate Cross Polymer, Triethanolamine, Propylene Glycol, Cetyl Alcohol, Potassium Cetyl Phosphate, Titanium Dioxide, Phenoxyethanol, Ethylhexylglycerin, Parfum.



### DIRECTIONS

Start by cleansing the face thoroughly with the SkinESSENTIALS Deep Facial Cleansing Gel followed by the SkinESSENTIALS Purifying Facial Toner – Alcohol Free. Next, apply the SkinHYDRATE Intense Hydrating Mask. Leave on to take effect for 10 to 15 minutes. Once dry remove gently with warm water and a cloth. Use as needed. Finish off by applying the SkinESSENTIALS Day Moisturiser with SPF15 in the AM or the SkinESSENTIALS Active Night Moisturiser if used in the PM.

## SkinHYDRATE Hyaluronic Serum Moisture Boost Day

### DESCRIPTION

SkinHYDRATE Hyaluronic Serum Moisture Boost Day is a combination of special blended oils and hyaluronic acid that have been infused into a gel formulation, resulting in a gel that delivers a rich moisturising and deep hydrating effect to the skin with the added advantage of quick absorption and helping the skin protect itself from free radical damage. With the correct combination of fine oils and actives, this serum delivers a rich and moisturising effect that helps retard the aging process of the face; with the added advantage of helping improve dry and wrinkled skin.

### DIRECTIONS

Use daily. Follow by applying SkinESSENTIALS Day Moisturiser with SPF15.



### INGREDIENTS

Aqua (water), Vitis Vinifera (Grape) Seed Oil, Prunus Amygdalus Dulcis (Sweet Almond) Oil, Simmondsia Chinensis (Jojoba) Seed Oil, Cannabis Sativa Seed Oil, Argania Spinosa Kernel Oil, Sodium Hyaluronate, Cocos Nucifera (Coconut) Oil, Tocopherol Acetate, Melaleuca Alternifolia (Tea Tree) Leaf Oil, Ricinus Communis (Castor) Seed Oil, Isopropyl Palmitate, water (and) Phenethyl Alcohol (and) Sodium Carrageenan (and) Sea Salt, Carbomer, Cetyl Alcohol, Cetearyl Alcohol, Paraffinum Liquidum, Petrolatum, Propylene Glycol, Ceteareth, DMDM Hydantoin, Triethanolamine, Phenoxyethanol (and) Ethylhexylglycerin.

## SkinHYDRATE Hyaluronic Serum Moisture Boost Night

### DESCRIPTION

SkinHYDRATE Hyaluronic Serum Moisture Boost Night is a combination of special oils which work together to moisturise and hydrate the skin and protect it from free radical damage. This advanced serum delivers a rich and moisturising oil that helps retard the aging process of the face; with the added advantage of helping improve dry and wrinkled face.

### DIRECTIONS

Apply at night 3 times per week, alternating with the SkinESSENTIALS Active Night Moisturiser.

**Benefits Of Jojoba Oil**  
A natural oil that mimics the skins natural oil to penetrate deeply into the skin. It locks in moisture to keep skin healthy and hydrated.

**Benefits Of Sodium Hyaluronate**  
A moisture retaining ingredient and humectant. It helps to enhance the appearance of dry or damaged skin by reducing flaking and restoring suppleness. It also helps to fight wrinkles and other signs of aging.

**Actives**  
Grape Seed Oil, Sweet Almond Oil, Jojoba Oil, Sodium Hyaluronate, Tea Tree Oil.

**Benefits Of Grape Seed Oil**  
Assists in skin repair and has antiseptic and mild astringent properties. Grape seeds are loaded with powerful antioxidants and natural plant compounds which help fight free radicals that lead to premature aging.

**Benefits Of Sweet Almond Oil**  
Packed with nutrients and has many therapeutic abilities. It has excellent emollient activity and as such is popular massage oil which helps to get rid of excessively dry skin.

**Benefits Of Tea Tree Oil**  
An essential oil that is extracted from the leaves of the Melaleuca bush. It helps to relieve some scalp and skin conditions, such as dandruff and psoriasis and has many other anti-viral and anti-fungal properties. Argan Oil is a plant oil produced from the kernels of the Argan tree. It's rich in vitamins A, C and E, as well as being loaded with antioxidants, linoleic acid and omega-6 fatty acids. It has many benefits for the skin such as helping to eliminate dermatitis, acne, razor bumps and boosts cell production.



### INGREDIENTS

Vitis vinifera (Grape) Seed Oil, Prunus Amygdalus Dulcis (Sweet Almond) Oil, Simmondsia chinensis (Jojoba) Seed Oil, Cannabis Sativa Seed Oil, Argania Spinosa Kernel Oil, Sodium Hyaluronate, Cocos Nucifera (Coconut) Oil, Tocopherol Acetate, Melaleuca alternifolia (Tea Tree) Leaf Oil, Ricinus Communis (Castor) Seed Oil, Isopropyl Palmitate, water (and) Phenethyl alcohol (and) Sodium Carrageenan (and) Sea Salt.

Oolala Says

The high - quality formulations of our ingredients are our core focus.

— OOLALA COLLECTION —



www.oolalacollection.com



@TheOolalaCollectionClub



@theoolalacollection



info@oolalacollection.com

Customer care: 0795452926

vegan SA



## SkinGLOW Radiance Repair Serum

### DESCRIPTION

SkinGLOW Radiance Repair Serum is a powerful blend of plant extracts that assists with the reduction of inflammation and the stimulation of circulation. This formulation also helps to soothe redness and minimize bruising. Beneficial for intolerant skin. Suitable for all skin types.

### INGREDIENTS

Aqua(Water), Hamamelis Virginia (Witch Hazel) Distillate Oil, Acrylates C10-C30 Alkyl Acrylate Cross Polymer, Glycerin, Arnica Cordifolia Extract, Cucumis Sativus(-Cucumber) Extract, Sambucus Nigra(Elder Tree) Extract, Malva Sylvestris(Mallow) Extract, Hedera Helix(Ivy) Extract, Anacyclus Pyrethrum(Pellitory) Extract, Propylene Glycol, Polysorbate-20, Triethanolamine, Disodium EDTA, Phenoxyethanol, Ethylhexylglycerin, Parfum.

### Actives

Arnica Cordifolia Extract, Cucumis Sativus(Cucumber) Extract, Sambucus Nigra(Elder Tree) Extract, Malva Sylvestris(Mallow) Extract, Hedera Helix(Ivy) Extract, Anacyclus Pyrethrum(Pellitory) Extract.

#### Benefits Of Arnica Cordifolia Extract

Used as an anti-inflammatory and pain-relieving agent in the healing of bruises and sprains. Accelerates the reduction of dark circles.

#### Benefits Of Elder Tree

Reduction of inflammation and stimulating circulation in skin.

#### Benefits Of Pellitory

Herb used as a stimulant and circulation enhancer.



#### Benefits Of Mallow

Soothing, healing and softening to skin. Excellent in reducing inflammation.

#### Benefits Of Ivy

Natural cleansing extract, has skin refining actions. Firming and tightening to the tissues.

#### Benefits Of Cucumber

Known for its moisture-binding, moisture-regulating, softening, cooling and anti-inflammatory properties.

### DIRECTIONS

Apply SkinGLOW Radiance Repair Serum after cleansing and toning with the SkinESSENTIALS Deep Facial Cleansing Gel and the SkinESSENTIALS Purifying Facial Toner - Alcohol Free. Use twice daily.

## SkinGLOW Targeted Pigmentation Corrector

### DESCRIPTION

SkinGLOW Targeted Pigmentation Corrector has been designed with a scientifically advanced botanical complex to diminish the appearance of skin blemishes due to hormonal changes or pollutants. This unisex formulation promotes a more uniform lighter appearance to the affected areas.

### INGREDIENTS

Aqua(Water), Alcohol Denat, Niacinamide, Zinc PCA, Chlorella Vulgaris/Lupinus Albus Protein Ferment, Nasturtium Officinale Flower/Leaf Extract, Propylene Glycol, Glycerin, Isopropyl Palmitate, Carbomer, Triethanolamine, Phenoxyethanol (and) Ethylhexylglycerin, Parfum.

### Actives

CellActive®-White (Aqua (water) and Alcohol and Nasturtium Officinale Extract and Niacinamide and Chlorella Vulgaris / Lupinus Albus Ferment and Zinc PCA).

#### Benefits Of CellActive®- White

Has been specially developed for gentle skin lightening. The balanced combination of Vitamin B3, sulphurous extract of watercress and bio-available zinc provides a naturally lighter complexion.

#### Essential Cell Boost-Factor

Promotes the homogeneous pigment distribution in the skin for a generally more uniform lighter appearance.



### DIRECTIONS

Apply twice daily to only the affected areas. For added results use SkinESSENTIALS Exfoliator Advanced with Enzymes twice a week to scuff off the dead cells. It is very important to always apply SkinESSENTIALS Day Moisturiser with SPF15 for daily sun protection.



[www.oolalacollection.com](http://www.oolalacollection.com)



[@TheOolalaCollectionClub](https://www.facebook.com/TheOolalaCollectionClub)



[@theoolalacollection](https://www.instagram.com/theoolalacollection)



[info@oolalacollection.com](mailto:info@oolalacollection.com)

Customer care: 0795452926

vegan SA





# Oolala Says

WE STAND FOR: Affordable Luxury, Proudly South African Products, Clean Beauty, Beauty Without Cruelty and Respecting Our Planet.

— OOLALA COLLECTION —



[www.oolalacollection.com](http://www.oolalacollection.com)



[@TheOolalaCollectionClub](https://www.facebook.com/TheOolalaCollectionClub)



[@theoolalacollection](https://www.instagram.com/theoolalacollection)



[info@oolalacollection.com](mailto:info@oolalacollection.com)

Customer care: 0795452926

vegan SA



## SkinFIRM Colloidal Silt Ultra Mud Mask For Hair & Body

### DESCRIPTION

A bioactive mineral and phospholipid-rich silt mud mask — with the active ingredient (SILT) sourced from fresh water lakes in Eastern Europe. Rich essential water-soluble vitamins and amino-acids. Phospholipids: A wonder of nature with scientifically proven skin hydrating qualities. Long-lasting moisturising & firming effects; suitable for all skin-types but especially dry & problem skin; evens out skin-tone with regular use; ideal for face masks, body wraps and bath treatments & even hair treatments.

### INGREDIENTS

Aqua(Water), Silt



### DIRECTIONS

Apply the SkinFIRM mud mask all over your hair and body to clean, moist skin using either a clean, new paint brush or your hands. Wait 15 to 20 minutes for the mud to dry. Rinse well with warm water. Hydrate, hydrate, hydrate. Be sure to drink plenty of water to rehydrate and assist in the detoxification process. Relax. Make yourself a cup of green tea and take some time to yourself. Enjoy feeling renewed!

For best results, Pre-treatment start by using the SkinFIRM Volcanic Rock Detox Body Scrub. Post treatment finish off by applying SkinFIRM Anti-Cellulite Tone & Smooth Gel and SkinFIRM Ant-Cellulite Slim & Firm Massage Oil.

## SkinFIRM Volcanic Rock Detox Body Scrub

### DESCRIPTION

SkinFIRM Volcanic Rock Detox Body Scrub contains natural volcanic rock which helps with exfoliation, rejuvenation and stimulates the skin. Sea Fennel (Crithmum Maritimum) extract, a key ingredient in this formulation, is a potent marine botanical that exhibits anti-inflammatory, antioxidant, antiseptic, toning and skin-conditioning properties and is rich in minerals and vitamins A, C, E. It helps increase circulation and the reproduction of Collagen and Elastin while energizing the skin. Shea Butter and Sweet Almond Oil aid in rapid absorption to achieve optimum nourishment and moisturisation. Select additives help slow the loss of water from the skin by forming a barrier on the skin's surface.

### INGREDIENTS

Aqua(Water), Pumice, Cetearyl Alcohol, PEG-20 Stearate, Glycerin, Caprylic/Capric Triglyceride, Butyrospermum Parkii(Shea Butter), Prunus Amygdalus Dulcis(Sweet Almond) Oil, Glyceryl Stearate, PEG-100 Stearate, Crithmum Maritimum Extract, Cetyl Alcohol, Magnesium Aluminum Silicate, Triethanolamine, Caprylyl Glycol, Phenoxyethanol, Parfum.

**Actives**  
Pumice, Prunus Amygdalus Dulcis (Sweet Almond) Oil, Crithmum Maritimum Extract.

#### Benefits Of Sweet Almond Oil

Great moisturizer for all skin types, because it is easily absorbed.  
Helps to get rid of dry skin, wrinkles, impurities and dead cells. It soaks easily into the skin and gives a glowing touch to it.  
Since almond oil features vitamin E, it also helps to reduce inflammation and irritation of the skin.  
Moisturises better and deeper.  
Soothes skin irritation and inflammation.  
Delays ageing process.  
Lightens dark circles.  
Relieves dry and itching skin.  
Nourishes the skin and makes it smooth and soft.  
Cures body rashes.  
Rehydrates the skin.

#### Benefits Of Sea Fennel

Has a lightening effect on brown spots, anti-inflammatory, antioxidant, antiseptic, toning and skin-conditioning properties. Rich in minerals and vitamins A, C, E. It helps increase circulation and the reproduction of Collagen and Elastin while energizing the skin

#### Benefits Of Pumice Powder

Pumice Powder offers powerful exfoliating, so it's best suited for hands and feet, especially for removing hard skin on the feet.



### DIRECTIONS

Moisten skin and apply generous amounts of SkinFIRM Volcanic Rock Detox Body Scrub over the entire body. Massage in with circular motions.  
Rinse and dry.

For optimum results use together with SkinFIRM Anti-Cellulite Serum, SkinFIRM Anti-Cellulite Tone & Smooth Gel and SkinFIRM Ant-Cellulite Slim & Firm Massage Oil.

## SkinFIRM Anti-Cellulite Serum

### DESCRIPTION

SkinFIRM Anti-Cellulite Serum is a highly effective formulation for the reduction of cellulite. It consists of two key elements namely: Body Fit, amultifunctional peptide that inhibits the appearance of adipocytes (building blocks of cellulite) and Cell Active Shape which attacks cellulite on numerous levels

### INGREDIENTS

Aqua (Water), Persea Gratissima (Avocado) Oil, Vitis Vinifera (Grape) Seed Oil, Foeniculum Vulgare (Fennel) Oil, Juniperus Communis (Juniper Berry) Fruit Oil, Piper Nigrum (Black Pepper) seed oil, Cedrus Atlantica (Cedarwood) Bark Oil, Salvia Sclarea (Clary) Oil, Cupressus Sempervirens (Cypress) Oil, Ocimum Basilicum (Basil) Oil, Carbomer, Tocopheryl Acetate, Triethanolamine, Phenoxyethanol (and) Ethylhexylglycerin.

### Benefits Of Cell Active Shape

Strengthening the outer layer of the skin (Epidermis). Reduces fat infiltration into the middle layer of the skin (dermis). Speeds up the splitting of fats. Improves micro circulation — removing water and waste products within the cellulite structure.



#### Actives

Caffeine, Calceus Farkshii Root Extract, Chlorella Vulgaris, Lupinus Albus Protein Ferment, Coco Glucoside, Caprylyl Glycol, Glutamine.

#### Benefits Of Caffeine

Dilates blood vessels and increases urine volume and it stimulates the breakdown of fat cells and widens the blood vessels in the area. Caffeine stimulates the circulation and blood flow, which helps remove toxins, fat and excess fluids.

#### Benefits Of BODYFIT™

a multi-functional peptide that inhibits the maturation of adipocytes which are the building blocks of cellulite - visibly reduces the appearance of cellulite, while contributing to an improvement in drainage and water distribution throughout the tissue. As the cellulite diminishes, skin firmness is restored.

### DIRECTIONS

SkinFIRM Anti-Cellulite Serum is a concentrated formulation therefore only a small amount needs to be applied to the affected area (posterior and thigh), twice daily. Apply after bath on the problem areas and softly massage with circular movements. It is easily absorbed. Suitable for use throughout the entire year and by all ages.

## SkinFIRM Anti-Cellulite Tone & Smooth Gel

### DESCRIPTION

SkinFIRM Anti-Cellulite Tone & Smooth Gel is a highly effective formulation using all-natural oils in a gel formulation to help firm and minimise the appearance of cellulite. This Gel helps moisturise and bring more blood flow into the area. To improve results, use in conjunction with SkinFIRM Anti-Cellulite Serum.

### INGREDIENTS

Aqua (Water), Persea Gratissima (Avocado) Oil, Vitis Vinifera (Grape) Seed Oil, Foeniculum Vulgare (Fennel) Oil, Juniperus Communis (Juniper Berry) Fruit Oil, Piper Nigrum (Black Pepper) seed oil, Cedrus Atlantica (Cedarwood) Bark Oil, Salvia Sclarea (Clary) Oil, Cupressus Sempervirens (Cypress) Oil, Ocimum Basilicum (Basil) Oil, Carbomer, Tocopheryl Acetate, Triethanolamine, Phenoxyethanol (and) Ethylhexylglycerin.



#### Product Benefits

SkinFIRM Anti-Cellulite Tone & Smooth Gel is a highly effective formulation using all-natural oils in a gel formulation to help firm and minimise the appearance of cellulite. This Gel helps moisturise and bring more blood flow into the area. To improve results, use in conjunction with SkinFIRM Anti-Cellulite Serum.

### DIRECTIONS

Apply a small amount of SkinFIRM Anti-Cellulite Tone & Smooth Gel onto desired area and gently massage in. Apply twice daily. If using SkinFIRM Anti-Cellulite Serum with this Massage Gel, apply the Serum Gel first, then massage SkinFIRM Anti-Cellulite Tone & Smooth Gel on top for a few minutes.

## SkinFIRM Anti-Cellulite Slim & Firm Massage Oil

### DESCRIPTION

SkinFIRM Anti-Cellulite Slim & Firm Massage Oil is a highly effective formulation using all-natural oils to help firm and minimise the appearance of cellulite. The Oil helps moisturise and bring more blood flow into the area. To improve results, use in conjunction with SkinFIRM Anti-Cellulite Tone & Smooth Gel.

### INGREDIENTS

Persea Gratissima (Avocado) Oil, Vitis Vinifera (Grape) Seed Oil, Foeniculum Vulgare (Fennel) Oil, Juniperus Communis (Juniper Berry) Fruit Oil, Piper Nigrum (Black Pepper) seed oil, Cedrus Atlantica (Cedarwood) Bark Oil, Salvia Sclarea (Clary) Oil, Cupressus Sempervirens (Cypress) Oil, Ocimum Basilicum (Basil) Oil, Tocopheryl Acetate.



### Product Benefits

SkinFIRM Anti-Cellulite Slim & Firm Massage Oil is a highly effective formulation using all-natural oils to help firm and minimise the appearance of cellulite. The Oil helps moisturise and bring more blood flow into the area. To improve results, use in conjunction with SkinFIRM Anti-Cellulite Tone & Smooth Gel.

### DIRECTIONS

Apply a few drops of onto desired area and gently massage in. Apply twice daily. If using SkinFIRM Anti-Cellulite Tone & Smooth Gel with this Massage Oil, apply the Serum Gel first, then massage the Cellulite Massage Oil on top for a few minutes.

## SkinFIRM Firm & Lift Breast Gel

### DESCRIPTION

SkinFIRM Firm & Lift Breast Gel has been formulated using the latest in peptide technology, to enhance skin elasticity, tone and firm for a more youthful and fuller appearance to the breast and cleavage area. Helps support the skins innate rejuvenation process.

### INGREDIENTS

Aqua(Water), Pyrus Cydonia Seed Extract, Glycerin, Alcohol Denat, Chlorella Vulgaris Lupinus Albus Protein Ferment, Garcinia Mangostana Peel Extract, Glyceryl Polymethacrylate, Rahnella Soy Protein Ferment Water, Propylene Glycol, Glycerin, PEG-8, Palmitoyl Oligopeptide, Butylene Glycol, PEG-60 Almond Glycerides, Carbomer, Aminomethyl Propaniol, Phenoxyethanol, Methylisothiazolinone, Iodopropynyl Butylcarbamate, Parfum.



### Actives

Pyrus Cydonia Seed Extract, Glycerin, Alcohol Denat, Chlorella Vulgaris Lupinus Albus Protein Ferment, Garcinia Mangostana Peel Extract (CellActive-Form), Glyceryl Polymethacrylate, Rahnella Soy Protein Ferment Water, Propylene Glycol, Glycerin, PEG-8, Palmitoyl Oligopeptide (Bio Bustyl).

### Benefits Of Bio Bustyl

A biopeptide that stimulates Dermal (Skin) collagen synthesis thereby restructuring elastic fibres leading to an increase in tone and firmness.  
Toning/ Invigorating.  
Firming/ Botox-like.

### Benefits Of CellActive-Form

A plant-based complex of active ingredients supports the natural process of lipid deposition in the skin lending fullness to the bust - improves skin elasticity in the cleavage area; firms and smooths the surface of the breasts.

### DIRECTIONS

Apply twice daily, preferably after bathing while skin is supple & warm. Massage in circular movements around the bust + décolleté. For added benefit, exfoliate 2 -3 times per month with SkinESSENTIALS Brightening Exfoliator Scrub.



[www.oolalacollection.com](http://www.oolalacollection.com)



[@TheOolalaCollectionClub](https://www.facebook.com/TheOolalaCollectionClub)



[@theoolalacollection](https://www.instagram.com/theoolalacollection)



[info@oolalacollection.com](mailto:info@oolalacollection.com)

Customer care: 0795452926

vegan SA





## SkinFIRM Detox & Energize Orange & Cinnamon Body Butter

### DESCRIPTION

Gives your skin a dose of ultra-rich hydration.  
Body moisturiser.  
Softens skin.  
Fresh orange and cinnamon scent.  
Easily absorbed.

### INGREDIENTS

Aqua (Water), Vitis Vinifera (Grape) Seed Oil, Glycerin, Butrospermum Parkii (Shea) Butter, Oil Ricini, Isopropyl Myristate, Sorbitan Stearate, Paraffinum Liquidum, Carbomer, Cetyl Alcohol, Potassium Cetyl Phosphate, Argania Spinosa (Argan) Nut Oil, Butylene Glycol, Triethanolamine, Phenoxyethanol, Ethylhexylglycerin, Parfum.



### Product Benefits

Gives your skin a dose of ultra-rich hydration.  
Body moisturiser.  
Softens skin.  
Fresh orange and cinnamon scent.  
Easily absorbed.

### DIRECTIONS

Scoop out with your fingers and massage into your skin as often as required.

## SkinFIRM Relax & Renew Vanilla Body Butter

### DESCRIPTION

Gives your skin a dose of ultra-rich hydration.  
Body moisturiser.  
Softens skin.  
Fresh vanilla scent.  
Easily absorbed.

### INGREDIENTS

Aqua (Water), Vitis Vinifera (Grape) Seed Oil, Glycerin, Butrospermum Parkii (Shea) Butter, Oil Ricini, Isopropyl Myristate, Sorbitan Stearate, Paraffinum Liquidum, Carbomer, Cetyl Alcohol, Potassium Cetyl Phosphate, Argania Spinosa (Argan) Nut Oil, Butylene Glycol, Triethanolamine, Phenoxyethanol, Ethylhexylglycerin, Parfum.



### Product Benefits

Gives your skin a dose of ultra-rich hydration.  
Body moisturiser.  
Softens skin.  
Fresh vanilla scent.  
Easily absorbed.

### DIRECTIONS

Scoop out with your fingers and massage into your skin as often as required.

## SkinFIRM Pamper & Glow Peach Body Butter

### DESCRIPTION

Gives your skin a dose of ultra-rich hydration.  
Body moisturiser.  
Softens skin.  
Fresh peach scent.  
Easily absorbed.

### INGREDIENTS

Aqua (Water), Vitis Vinifera (Grape) Seed Oil, Glycerin, Butrospermum Parkii (Shea) Butter, Oil Ricini, Isopropyl Myristate, Sorbitan Stearate, Paraffinum Liquidum, Carbomer, Cetyl Alcohol, Potassium Cetyl Phosphate, Argania Spinosa (Argan) Nut Oil, Butylene Glycol, Triethanolamine, Phenoxyethanol, Ethylhexylglycerin, Parfum.



### Product Benefits

Gives your skin a dose of ultra-rich hydration.  
Body moisturiser.  
Softens skin.  
Fresh peach scent.  
Easily absorbed.

### DIRECTIONS

Scoop out with your fingers and massage into your skin as often as required.

## SkinFIRM Hydrate & Refresh Strawberry Body Butter

### DESCRIPTION

Gives your skin a dose of ultra-rich hydration.  
Body moisturiser.  
Softens skin.  
Fresh strawberry scent.  
Easily absorbed.

### INGREDIENTS

Aqua (Water), Vitis Vinifera (Grape) Seed Oil, Glycerin, Butrospermum Parkii (Shea) Butter, Oil Ricini, Isopropyl Myristate, Sorbitan Stearate, Paraffinum Liquidum, Carbomer, Cetyl Alcohol, Potassium Cetyl Phosphate, Argania Spinosa (Argan) Nut Oil, Butylene Glycol, Triethanolamine, Phenoxyethanol, Ethylhexylglycerin, Parfum.



### Product Benefits

Gives your skin a dose of ultra-rich hydration.  
Body Moisturiser.  
Softens skin.  
Fresh strawberry scent.  
Easily absorbed.

### DIRECTIONS

Scoop out with your fingers and massage into your skin as often as required.

# Oolala Says

The Oolala Collection Club is all about beauty with brains and a heart.

— OOLALA COLLECTION —



[www.oolalacollection.com](http://www.oolalacollection.com)



[@TheOolalaCollectionClub](https://www.facebook.com/TheOolalaCollectionClub)



[@theoolalacollection](https://www.instagram.com/theoolalacollection)



[info@oolalacollection.com](mailto:info@oolalacollection.com)

Customer care: 0795452926

vegan SA



## OolalaSPORT COLD Therapy Muscle Relief Rub

### DESCRIPTION

Professional grade topical gel that has been exclusively formulated using quality botanical extracts and essential oils. It is an all-natural, deep penetrating, soothing gel that provides controlled cooling without freezing. Assists in relieving aching muscles and joints. It penetrates deeply and provides instant temporary pain relief to the affected or swollen area. The cooling therapy may decrease blood flow to the affected area and this could help minimise damage.

### INGREDIENTS

Aqua (Water), Vitis Vinifera (Grape) Seed Oil, Glycerin, Butrospermum Parkii (Shea) Butter, Oil Ricini, Isopropyl Myristate, Sorbitan Stearate, Paraffinum Liquidum, Carbomer, Cetyl Alcohol, Potassium Cetyl Phosphate, Argania Spinosa (Argan) Nut Oil, Butylene Glycol, Triethanolamine, Phenoxyethanol, Ethylhexylglycerin, Parfum.

### Actives

Aqua (Water), Isopropyl Alcohol, Menthol, Eucalyptus Globulus (Eucalyptus) Leaf Oil, Gaultheria Procumbens (Wintergreen) Leaf Oil, Oil, Mentha Piperita (Peppermint) Oil, Carbomer, Melaleuca Alternifolia (Tea Tree) Leaf Oil, Arnica Montana (Arnica flower) Extract, Piper Nigrum (Black Pepper) Seed Oil, Chamomille Recutita (Matricaria) Flower Extract, Glycerine, Triethanolamine, Phenoxyethanol and Ethylhexylglycerin, Colour.



### DIRECTIONS

Apply a small amount and gently massage into the affected area. Apply 3-4 times a day. Wash hands with soap and warm water after application. Do not apply to broken or irritated skin. Avoid contact with eyes or mucous membranes. Efficiency of support may vary between users.

## OolalaSPORT HOT Therapy Muscle Relief Rub

### DESCRIPTION

Professional grade topical gel that has been exclusively formulated using quality botanical extracts and essential oils. It is an all-natural, deep penetrating, soothing gel that provides a lasting heat that assists in relieving aching muscles and joints. This pain-relieving formula penetrates quickly and deeply. This non-greasy gel assists in preventing deterioration and injury, strengthens areas of weakness and discomfort, and aids in the recovery of muscle & joint stress and damage. Helps improve circulation while eliminating toxins and internal bruising. Efficiency of support may vary between users.

### INGREDIENTS

Aqua (Water), Vitis Vinifera (Grape) Seed Oil, Glycerin, Butrospermum Parkii (Shea) Butter, Oil Ricini, Isopropyl Myristate, Sorbitan Stearate, Paraffinum Liquidum, Carbomer, Cetyl Alcohol, Potassium Cetyl Phosphate, Argania Spinosa (Argan) Nut Oil, Butylene Glycol, Triethanolamine, Phenoxyethanol, Ethylhexylglycerin, Parfum.

### Actives

Aqua (water), Isopropyl Alcohol, Menthol, Eucalyptus Globulus (Eucalyptus) Leaf Oil, Gaultheria Procumbens (Wintergreen) Leaf Oil, Mentha Piperita (Peppermint) Oil, Carbomer, Melaleuca Alternifolia (Tea Tree) Leaf Oil, Arnica Montana (Arnica flower) Extract, Piper Nigrum (Black Pepper) Seed Oil, Chamomille Recutita (Matricaria) Flower Extract, Glycerine, Ulmus Fulva Bark Extract, Triethanolamine, Vanillyl Butyl Ether, Phenoxyethanol and Ethylhexylglycerin, Colour.



### DIRECTIONS

Let your body cool down first before application. Massage a small amount onto the affected area. Never put the cream near your eyes or mucous membranes, such as the lower nose. Do not use on or near your private area. Wash your hands after you have rubbed the cream into your skin. Stop using if your skin becomes red, has a rash, or feels irritated. Never use with a heating pad on top of the area. Not to be used by breastfeeding or pregnant women.

Efficiency of support may vary between users.



# Oolala Says

Our ethics drive our recommendations, not our bottom line.

— OOLALA COLLECTION —



[www.oolalacollection.com](http://www.oolalacollection.com)



[@TheOolalaCollectionClub](https://www.facebook.com/TheOolalaCollectionClub)



[@theoolalacollection](https://www.instagram.com/theoolalacollection)



[info@oolalacollection.com](mailto:info@oolalacollection.com)

Customer care: 0795452926

vegan SA



## OolalaMAN Smooth Shaving Gel With Argan Oil

### DESCRIPTION

OolalaMAN Smooth Shaving Gel With Argan Oil is the best way to achieve that close-for-comfort shave without leaving your skin dry and irritated. Combined with a minty-freshness and a rich Argan oil moisturised finish, this shaving cream will keep your face feeling fit and fresh as you go about your daily routine.

### INGREDIENTS

Aqua(Water), Stearic Acid, Palm Kernel Acid, Potassium Hydroxide, Sorbitol, Ethylhexyl Hydroxystearate, PEG-7 Glycerol Cocoate, Argania Spinosa(Argan) Nut Oil, Sodium Hydroxide, Sodium Borate, Eucalyptus Globulus(Eucalyptus) Oil, Sodium Silicate, Menthol, Parfum.



### DIRECTIONS

Creates an incredible lather and great shave for all skin types. All that is needed is to dampen face and apply the cream using circular hand motions. Can also be used on other parts of the body.

## OolalaMAN Condition & Prep Pre Shaving Oil

### DESCRIPTION

OolalaMAN Condition & Prep Pre Shaving Oil works to rejuvenate the face prior to shaving. This product contains a blend of numerous natural oils that are healthy for your skin. Will leave your skin feeling hydrated and glowing after each application.

### INGREDIENTS

Vitis Vinifera(Grape) Seed Oil, Isopropyl Myristate, Caprylic/Capric Triglyceride, Eucalyptus Globulus(Eucalyptus) Oil, Methyl Salicylate, Menta Piperta(Peppermint) Oil.



### DIRECTIONS

Ideally shave after a hot bath or shower. The heat and moisture will help prepare the skin and whiskers for your shave. Apply the OolalaMAN Condition & Prep Pre-Shaving Oil and work into the skin and beard to soften and prepare the skin before shaving. Finally apply OolalaMAN Smooth Shaving Gel with Argan for a smooth and comfortable shave.



[www.oolalacollection.com](http://www.oolalacollection.com)



[@TheOolalaCollectionClub](https://www.facebook.com/TheOolalaCollectionClub)



[@theoolalacollection](https://www.instagram.com/theoolalacollection)



[info@oolalacollection.com](mailto:info@oolalacollection.com)

Customer care: 0795452926

vegan SA



## OolalaMAN Conditioning Beard Oil Light

### DESCRIPTION

OolalaMAN Conditioning Beard Oil Light helps to replenish natural oils. This formulation is designed to prevent dryness and itchiness by moisturizing both skin and beard.

### INGREDIENTS

Vitis Vinifera (Grape) Seed Oil, Prunus Amygdalus Dulcis (Sweet Almond) Oil, Oryza Sativa (Rice) Bran Oil, Cannabis sativa Seed Oil, Cocos Nucifera (Coconut) Oil, Persea Gratissima (Avocado) Oil, Macadamia Ternifolia Seed Oil, Ricinus Communis (Castor) Seed Oil, Carthamus Tinctorius (Safflower) Seed Oil, Moringa Oleifera Seed Oil, Simmondsia chinensis (Jojoba) Seed Oil, Argania Spinosa (Argan) Nut Oil, Tocopheryl Acetate, Parfum.



### DIRECTIONS

Now that you have our super awesome OolalaMAN Conditioning Beard Oil Light in your palm, you'll want to rub it between your hands to even the distribution. The next step is to work the beard oil into your skin, then onto your beard. Make sure you don't neglect the moustache area. It is recommended to apply while your skin is still warm and damp from a recent shower. The pores are open, and the beard oil will work itself into the skin. If you have any extra, rub it onto your elbows, neck, or into your hair. OolalaMAN Conditioning Beard Oil Light is designed to make the skin healthy and healthy skin results in a healthy beard.

## OolalaMAN Conditioning Beard Oil Intense

### DESCRIPTION

OolalaMAN Conditioning Beard Oil Intense helps to replenish natural oils. This formulation is designed to prevent dryness and itchiness by moisturizing both skin and beard.

### INGREDIENTS

Vitis Vinifera (Grape) Seed Oil, Prunus Amygdalus Dulcis (Sweet Almond) Oil, Macadamia Ternifolia Seed Oil, Oryza Sativa (Rice) Bran Oil, Persea Gratissima (Avocado) Oil, Ricinus Communis (Castor) Seed Oil, Carthamus Tinctorius (Safflower) Seed Oil, Moringa Oleifera Seed Oil, Cannabis sativa Seed Oil, Mentha Piperita (Peppermint) Oil, Cedrus Atlantica (Cedarwood) Bark Oil, Melaleuca Alternifolia (Tea Tree) Leaf Oil, Argania Spinosa (Argan) Nut Oil, Tocopheryl Acetate, Parfum.



### DIRECTIONS

Now that you have our super awesome OolalaMAN Conditioning Beard Oil Intense in your palm, you'll want to rub it between your hands to even the distribution. The next step is to work the beard oil into your skin, then onto your beard. Make sure you don't neglect the moustache area. It is recommended to apply while your skin is still warm and damp from a recent shower. The pores are open, and the beard oil will work itself into the skin. If you have any extra, rub it onto your elbows, neck, or into your hair. OolalaMAN Conditioning Beard Oil Intense is designed to make the skin healthy and healthy skin results in a healthy beard.



# Oolala Says

We want our environment to be clean and healthy not only for this generation, but for future generations.

— OOLALA COLLECTION —



[www.oolalacollection.com](http://www.oolalacollection.com)



[@TheOolalaCollectionClub](https://www.facebook.com/TheOolalaCollectionClub)



[@theoolalacollection](https://www.instagram.com/theoolalacollection)



[info@oolalacollection.com](mailto:info@oolalacollection.com)

Customer care: 0795452926

vegan SA





## OolalaKITS OolalaTRAVEL - WOMAN



## OolalaKITS OolalaTRAVEL - MAN



[www.oolalacollection.com](http://www.oolalacollection.com)



[@TheOolalaCollectionClub](https://www.facebook.com/TheOolalaCollectionClub)



[@theoolalacollection](https://www.instagram.com/theoolalacollection)



[info@oolalacollection.com](mailto:info@oolalacollection.com)

Customer care: 0795452926

vegan SA



# Oolala Says

WE ARE: 100% VEGAN. 100% PARABEN FREE. 100% CRUELTY FREE. 0% QUESTIONABLE.

— OOLALA COLLECTION —



[www.oolalacollection.com](http://www.oolalacollection.com)



[@TheOolalaCollectionClub](https://www.facebook.com/TheOolalaCollectionClub)



[@theoolalacollection](https://www.instagram.com/theoolalacollection)



[info@oolalacollection.com](mailto:info@oolalacollection.com)

Customer care: 0795452926

vegan **SA**

